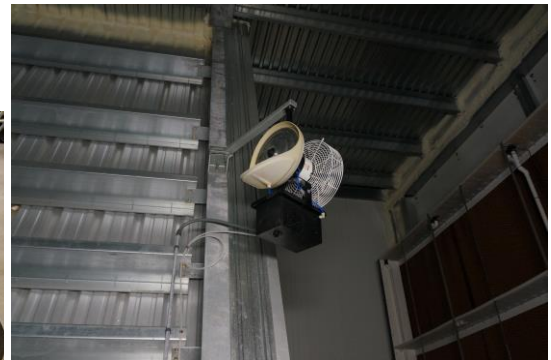


**Ceiling/floor mount sling humidifier with back fan 24" single 1/2hp 115/230 or 3 phase 240/480 VAC, direct drive with solenoid valve – on/off timer and needle valve flow adjustment. 1 phase motors have thermal overload protection and on off switch, 3 phase motors will require contactors with overload protection with means of disconnect (timing on/off valve is 120 vac only). Rear fan provides 20' forward air thrust. Unit requires no tank. If unit is times correctly no run off water line is required, run off water line can be simple water hose run to the drain site or outside. Ceiling model, floor model available, 120 vac pigtail cord/plug included.
One humidifier per 20k Bu is needed.**

Warranty: 1 year.

Stationary, heavy duty beam hanger with hardware is available (not included).

Ceiling humidifier comes with beam mount or girt mount bracket that swings 90 deg for adjustment or simply to move it out of the forklift way in the forklift alley, bay loading alley.



Notes: Please specify single or 3 phase motors to be used while ordering. Other shown models available. Excess water drains off from the shroud thru garden hose to drain or outside, standard water hose hook up, runs on standard water pressure. Water softener required if high mineral content is present. Rated at 5-10 gph per unit output is expected, adjustment range is 1-30 gph. Solenoid valve is \$110 vac.

Exclusions: Actual physical installation and electrical/drain off line/water line hook up is not included, ceiling mount tube with end plate for to frame/angle iron/unistrut attachment. Shipping and taxes extra- up to 4 units per pallet. Floor model same as ceiling with stand. Humidifier RH control not included (on/off manual switch included), means of unit switching for control will be required (contactor controlled from RH stat or control panel -not included).

Robert Drozdowski
Robert Drozdowski
rdrozdowski@agricontrol.com
Cell. 901-4174785
Fax. 901-339-0166
ACT/BTU SE USA Division in Memphis, TN